

INNOVET SPECIALIST HF SYSTEM

The UL classified, 30 kW generator is fully microprocessor controlled. Closed loop stabilization allows extremely accurate and repeatable output. Single kV increments and direct mAs selection allow quick and precise technique adjustment. Optional APR version provides Anatomically Programmed technique selection. The unit automatically selects the maximum available mA for the shortest possible exposure time. Generator options include tube-mounted console/handlebar for APR version, and power module storage inside table.

GENERATOR SPACE REQUIREMENTS

Power Module & H.V. Tank	37.5" height, 17.5" depth, 20.5" width
Generator Console	Approx. 3 x 8.5 x 17 inches
Communication Cables	(2) 25' standard, 1.5" conduit required
Cable Access	At power module rear, 24" above floor

GENERATOR ELECTRICAL REQUIREMENTS

See TDS020 for generator requirements.
The generator provides 24 VAC and 24 VDC supply voltages for table locks and collimation.

TABLE ELECTRICAL REQUIREMENTS

115 VAC @ 1.25A / 230 VAC @ 0.6A, 50/60 Hz
A 20-foot line cord with IEC plug is provided.

TUBESTAND ELECTRICAL (OPTION)

24 VDC, 1 Amp, from additional 05970 power supply or generator. (locks only) or 24VDC/24VAC, 4A/7A, from additional 02307 power supply or generator. (locks + collimator)
--

The table has a 400 pound load rating. It comes with foot-operated electric locks and a flat, floating top 76" x 30" inches in size. The table top can only be mounted by sliding it on from the end. The table base is open for easy electrical access and is 26 inches high for equipment storage or to house the generator if desired. Table top height is 31.5".

TABLE MOUNTING SPECIFICATIONS

The table bolts to the floor at four places. Recommended holding force for each bolt (not provided) is 500 pounds.

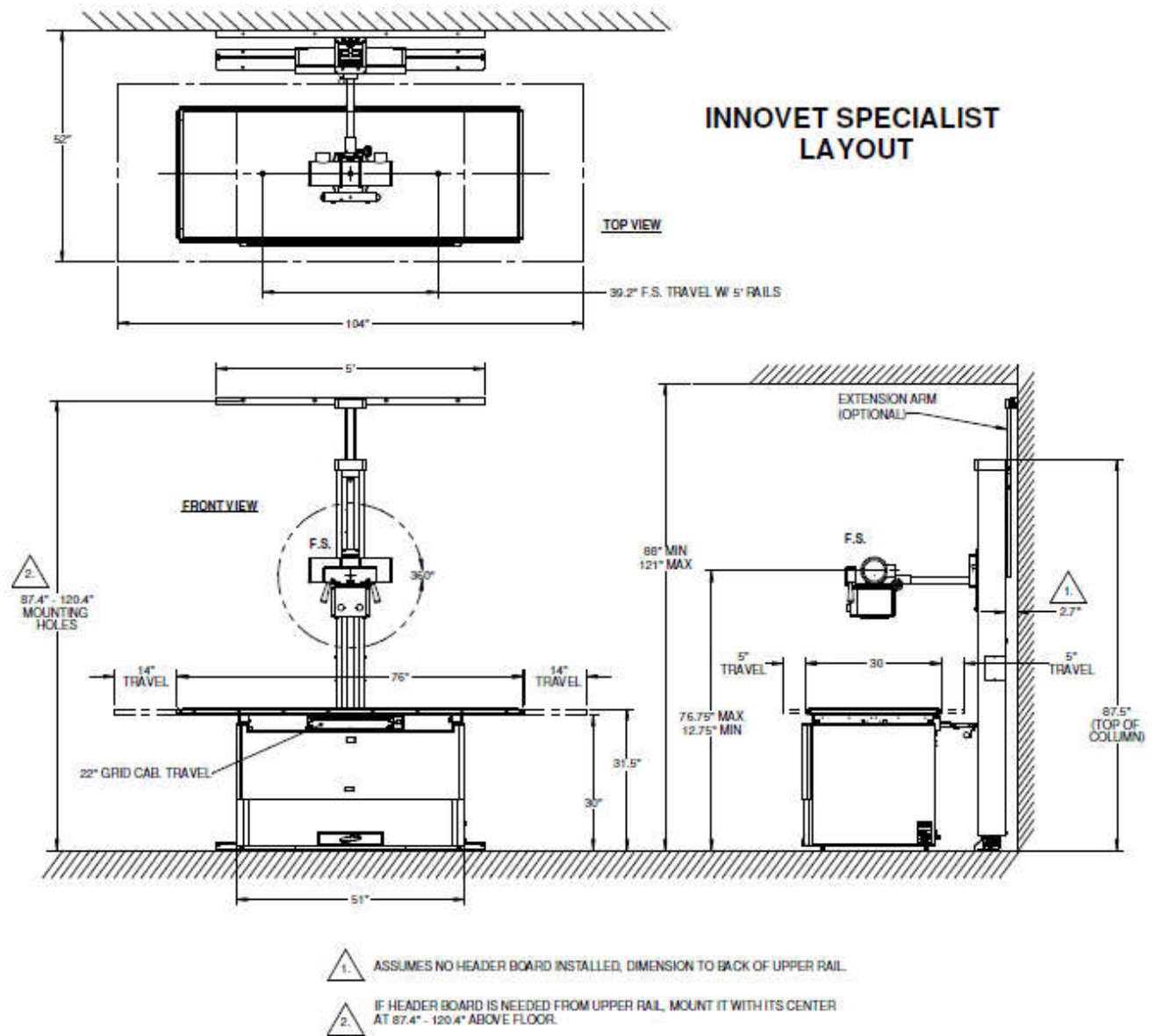
This tubestand is specified as a wall mount or ceiling mount at time of order. Five foot rails and electrical locks are standard. Options include eight or ten foot rails. Releasable tubestand-to-table interlock is standard.

TUBESTAND MOUNTING SPECIFICATIONS

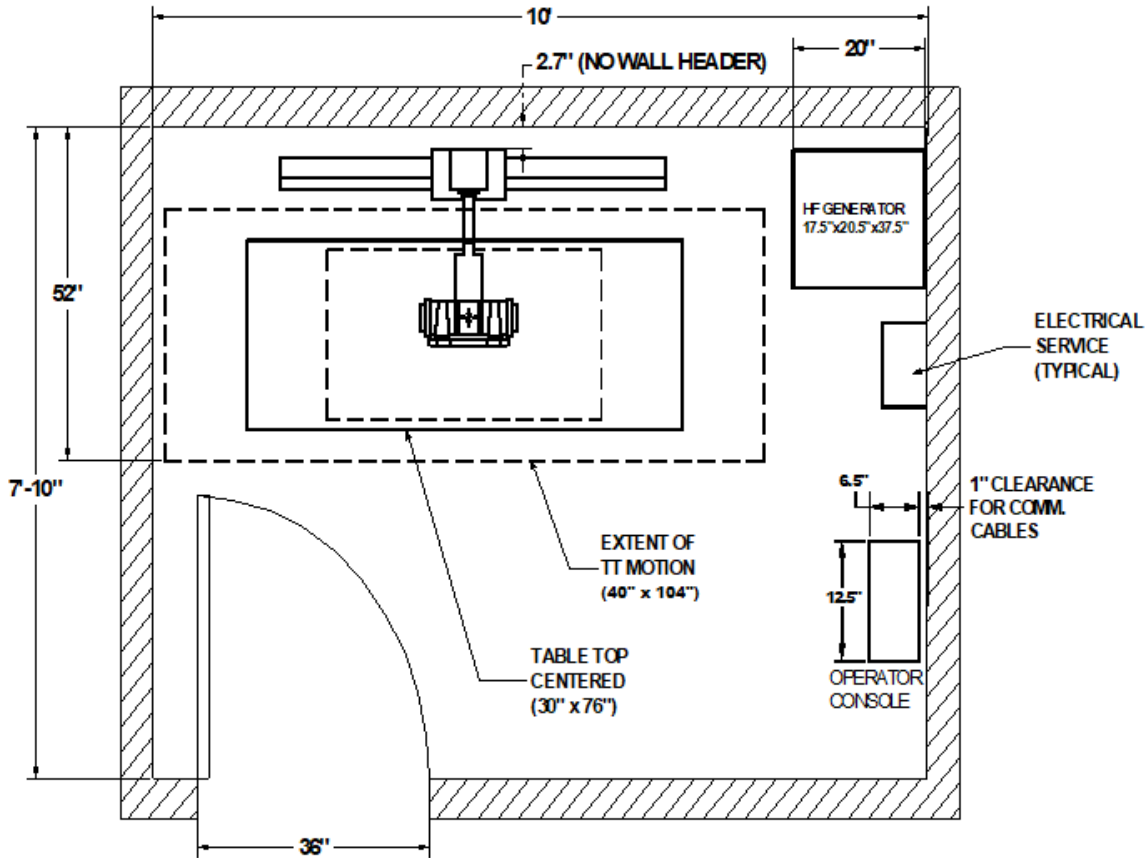
Ceiling height	88" – 121"
Wall / Ceiling mounting bolts	6" from end on 16" centers, each with a minimum pull-out force of 150 lbs.
Floor mounting bolts	6" on each end on 12" centers, each with a minimum pull-out force of 500 lbs.

SHIPPING INFORMATION

CONTENTS	DIMENSIONS (on pallet)	WEIGHT
Table top	4 x 34.5 x 87.5 inches	80 lbs
Table base	38 x 36 x 56 inches	430 lbs.
Generator	32 x 28 x 42 inches	215 lbs.
Tubestand Accessories	13 x 32 x 27 inches	55 lbs.
5 foot Rails	8 x 9 x 66 inches	50 lbs.
Column	8 x 9 x 86 inches	136 lbs.



ROOM LAYOUT INNOVET SPECIALIST



Notes:

1. Dimensions subject to change without notice.
2. As with all layouts, build in some cushion.
3. The above layout does not take into account base moldings, trim or other obstacles.
4. Door location may affect equipment layout.
5. Available option: Generator storage inside table.