

# **WALLSTAND WITH ELECTRIC LOCKS**

## **INSTALLATION INSTRUCTIONS**

**MODEL S111**

**D580-01 REV. K**

**SUMMIT INDUSTRIES, LLC**

**7555 N. Caldwell Ave.**

**Niles, IL 60714**

**773-588-2444 PHONE**

**773-588-3424 FAX**

**[WWW.SUMMITINDUSTRIES.NET](http://WWW.SUMMITINDUSTRIES.NET)**

**INSTALLATION, SERVICE, AND OPERATING MANUAL TEXT REVISION HISTORY**

Revision	Description	Release Date
E	CREATE MANUAL TEXT ECR #2064	December, 2000
F	ECR 3319	September, 2003
G	This manual applied to S109 & S111, now S111 only	October, 2011
H	Pg. 6 – Added “with cover”; Pg. 7 – Added “11) Install the wall bracket cover (see figure 6, Pg. 10)”; Added Pg 10. & figure 6.	March, 2014
J	Removed Section 1.2; Replaced Section 1.1 with Symbol Table	November, 2016
K	Updated address to Niles, IL; Added Intended Use, Attenuation, and Cleaning information to page 5.	June, 2017

**TABLE OF CONTENTS**

**1.0 DEFINITIONS AND SPECIFICATIONS ..... 4**

**2.0 COMPONENT LIST ..... 7**













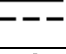

**3.0 ASSEMBLY NOTES ..... 7**

**4.0 WALLSTAND ASSEMBLY GUIDE..... 8**

**5.0 ELECTRIC BRAKE ADJUSTMENT ..... 9**

## 1.0 DEFINITIONS AND SPECIFICATIONS

### 1.1 Definition of symbols used on the equipment

Symbol Legends	
Symbol	Definition
	Date of manufacture
	Manufacturer
	Serial Number
	Reference Number (Model/Part Number)
	Keep Dry
	NOTE This symbol represents Information that assists the user of the manual in the performance of a task. It may provide the user with better methods of conducting the task, or it may point out conditions that could cause the system to fail to operate properly.
 CAUTION	Points out special procedures, or precautions, that personnel must follow to avoid equipment damage.
 WARNING	Identifies situations or actions that may affect patient or user safety. Disregarding a warning could result in patient or user injury.
	TYPE B APPLIED PART This symbol indicates equipment providing a particular degree of protection against electric shock, particularly regarding allowable leakage currents and reliability of the protective earth connection (if present).
	This symbol indicates an Electro Sensitive Device is present which must be carefully handled to prevent damage to the device.
	ELECTRIC SHOCK HAZARD WARNING This symbol indicates an electric shock hazard.
	DANGER VOLTAGE This symbol indicates hazards arising from dangerous voltages.
	DIRECT CURRENT This symbol indicates a direct current source.
	PROTECTIVE EARTH TERMINATIONS This symbol indicates protective earth terminations in device.

## 1.2 Definition of Symbols Used in this Manual

Throughout the manual are indented statements preceded by alert words. These alert words and the following statements may direct the user in the performance of a task, or inform the user of a potentially hazardous situation. Each alert word is always used with only one specific type of information. The alert words and the information they reference are as follows:



### **NOTE**

Information that assists the user of the manual in the performance of a task. It may provide the user with better methods of conducting the task, or it may point out conditions that could cause the device to fail to operate properly.



### **CAUTION**

Information that alerts the user of the manual to situations that could result in damage to the equipment.



### **WARNING**

Information that alerts the user of the manual to situations that could be hazardous to the health of the patient, the operator, the maintenance person, or others.

## 1.3 Notices

### **Intended Use**

This is an x-ray wallstand, a mechanical device intended to hold and position an X-ray image receptor during a radiographic procedures.



### **Attenuation**

All included components between the patient and image receptor have been certified to comply with 21 CFR Chapter 1 Subchapter J (§1020.30). For any such components added to the system it is the responsibility of the installer to ensure compliance.

### **Cleaning**

The manufacturer recommends disinfection of the equipment between uses for any surfaces that may come in contact with the patient during a radiographic procedure.

1.4 Specification Summary Table

SPECIFICATION SUMMARY TABLE																	
Electrical Ratings	24VDC, 1A  (or equivalent)																
Maximum Safe Working Load	50 lbs (22.5 kg)																
Environmental Conditions	<p>Temperature range for:</p> <table border="0"> <tr> <td>Transport and Storage</td> <td>Use</td> </tr> <tr> <td>-40° F to +158° F</td> <td>+50° F to +104° F</td> </tr> <tr> <td>-40° C to +70° C</td> <td>+10° C to +40° C</td> </tr> </table> <p>Relative Humidity Limits for:</p> <table border="0"> <tr> <td>Transport and Storage</td> <td>Use</td> </tr> <tr> <td>10% to 100%</td> <td>30% to 75%</td> </tr> </table> <p>Atmospheric pressure range for:</p> <table border="0"> <tr> <td>Transport and Storage</td> <td>Use</td> </tr> <tr> <td>14.67 inHg to 31.30 inHg</td> <td>20.67 inHg to 31.30 inHg</td> </tr> <tr> <td>500 hPa to 1060 hPa</td> <td>700 hPa to 1060 hPa</td> </tr> </table>	Transport and Storage	Use	-40° F to +158° F	+50° F to +104° F	-40° C to +70° C	+10° C to +40° C	Transport and Storage	Use	10% to 100%	30% to 75%	Transport and Storage	Use	14.67 inHg to 31.30 inHg	20.67 inHg to 31.30 inHg	500 hPa to 1060 hPa	700 hPa to 1060 hPa
Transport and Storage	Use																
-40° F to +158° F	+50° F to +104° F																
-40° C to +70° C	+10° C to +40° C																
Transport and Storage	Use																
10% to 100%	30% to 75%																
Transport and Storage	Use																
14.67 inHg to 31.30 inHg	20.67 inHg to 31.30 inHg																
500 hPa to 1060 hPa	700 hPa to 1060 hPa																
Information regarding potential EMC interference and advice for avoidance	<ul style="list-style-type: none"> <li>• Mains power quality should be that of a typical commercial or hospital environment</li> <li>• Power frequency magnetic fields should be at levels characteristic of a typical location in a commercial or hospital environment</li> </ul>																
Degree of protection against harmful ingress of water	IPX0/Ordinary																
Degree of protection against electric shock	Class I, Type B Applied Parts 																
Equipment not suitable for use with flammable anesthetic mixture with air or with oxygen or nitrous oxide.																	

## 2.0 COMPONENT LIST (as received)

- (1) Column Carton: includes column, counter weight, slide, pulleys
- (1) Accessory Carton:
  - (1) Instruction manual
  - (1) Floor Plate
  - (1) Wall Bracket (Flush or Offset application) with cover
  - (2) Upper and lower mounting channels for film cabinet or bucky
  - (1) Handle assembly (with lock release switch)
  - (1) Electric lock assembly (two locks)
  - (2) Column side covers
  - (1) Column cap
  - (1) Power supply
  - (2) Magnet cover assemblies
  - Trim Weights
  - (1) Chin rest kit

## 3.0 ASSEMBLY NOTES

- 1) All required fasteners should be found attached to the part they are used on.
- 2) Unpack and inspect all parts prior to assembly.



### WARNING

- 3) To avoid possible injury, do not insert fingers or hands into counter weight access openings on sides of column.

**4.0 WALLSTAND ASSEMBLY GUIDE**

- 1) Attach the floor plate.
- 2) The vertical slide is shipped factory-assembled in column. Attach the mounting channels to the slide.
- 3, 4) Stand the unit up and attach to the wall and floor with appropriate fasteners (not supplied).
- 5) Install the handle with the switch facing either to the right or left.
- 6) Connect power to the vertical slide, test and adjust locks (See Figure 2).
- 7) Mount the film cabinet or bucky.
- 8) Install the wall stand cap.
- 9) Insert trim weights as required.
- 10) Mount the side covers.
- 11) Install the wall bracket cover (see figure 6, Pg. 10).

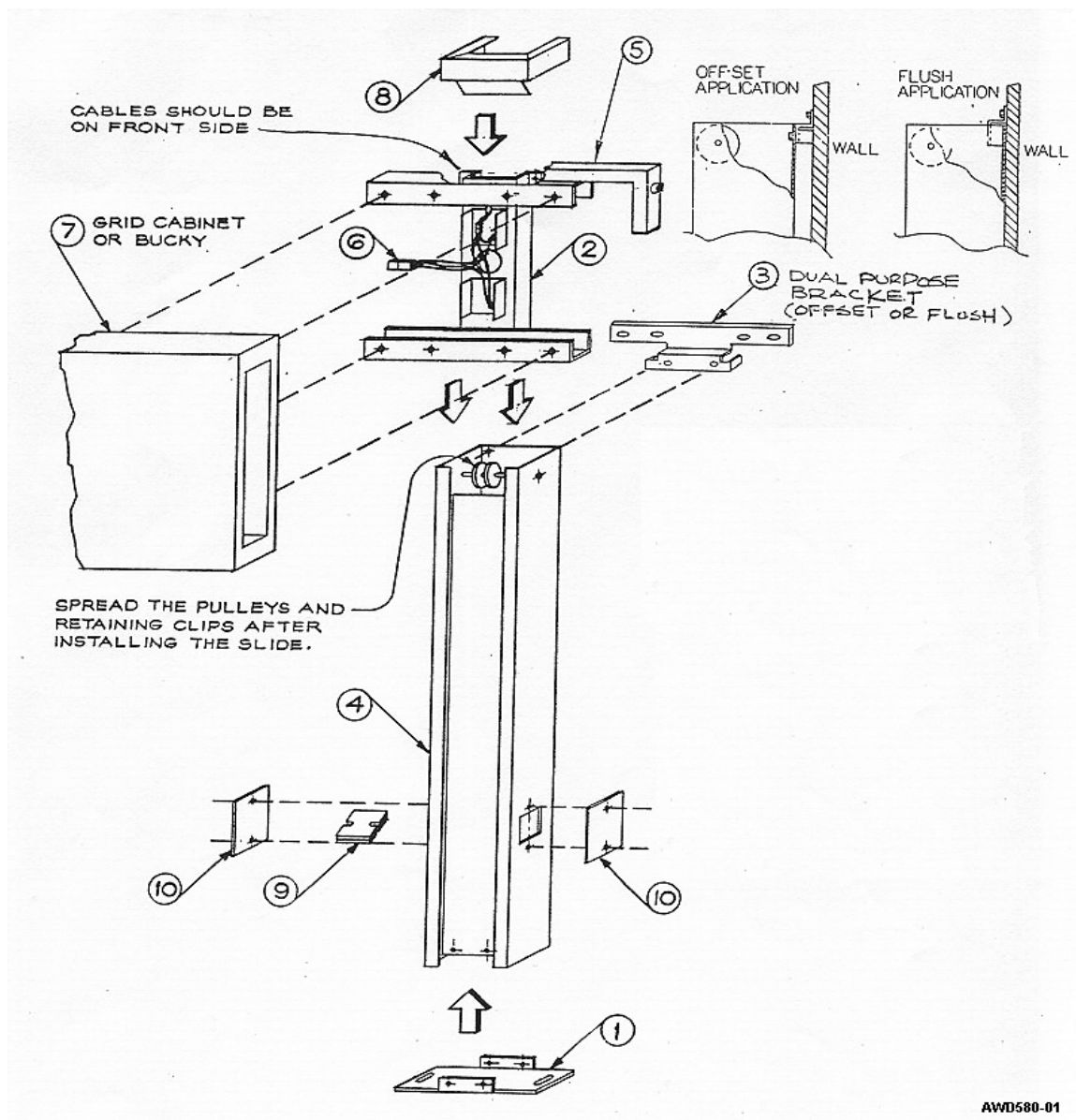
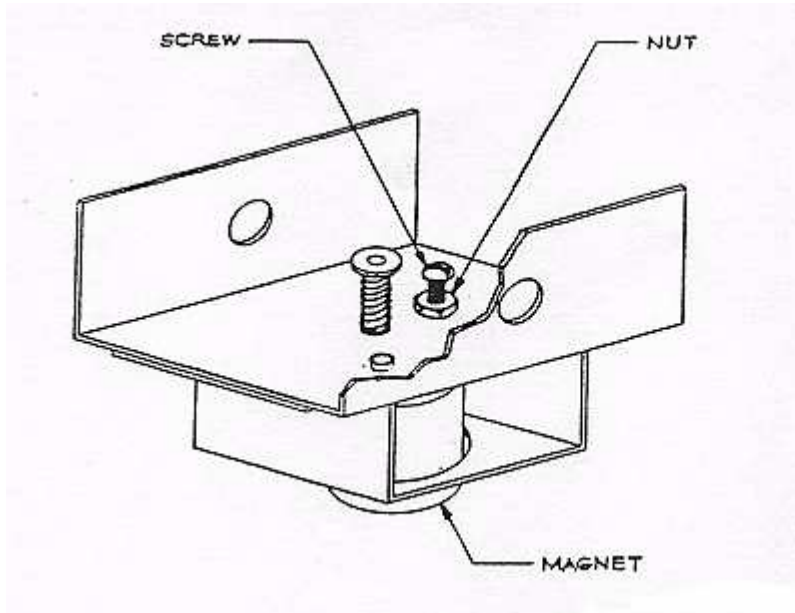


Figure 1

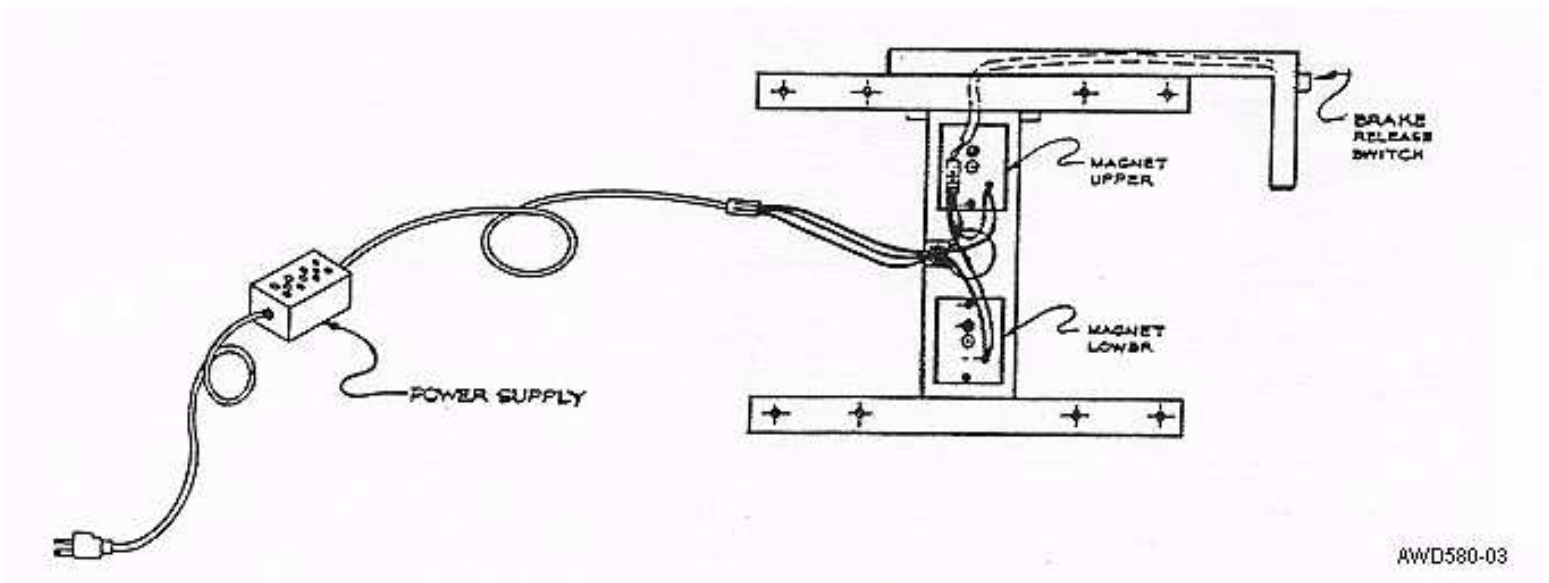


AWD580-02

Figure 2

## 5.0 ELECTRIC BRAKE ADJUSTMENT

- 1) Loosen the nut.
- 2) Turn the screw clockwise to move the magnet closer to, or counter clockwise to move away from brake strip of tubestand and tighten nut.
- 3) Magnet should be adjusted so that it is as close as possible to brake strip without dragging (approximately 1/32" gap).



AWD580-03

Figure 3

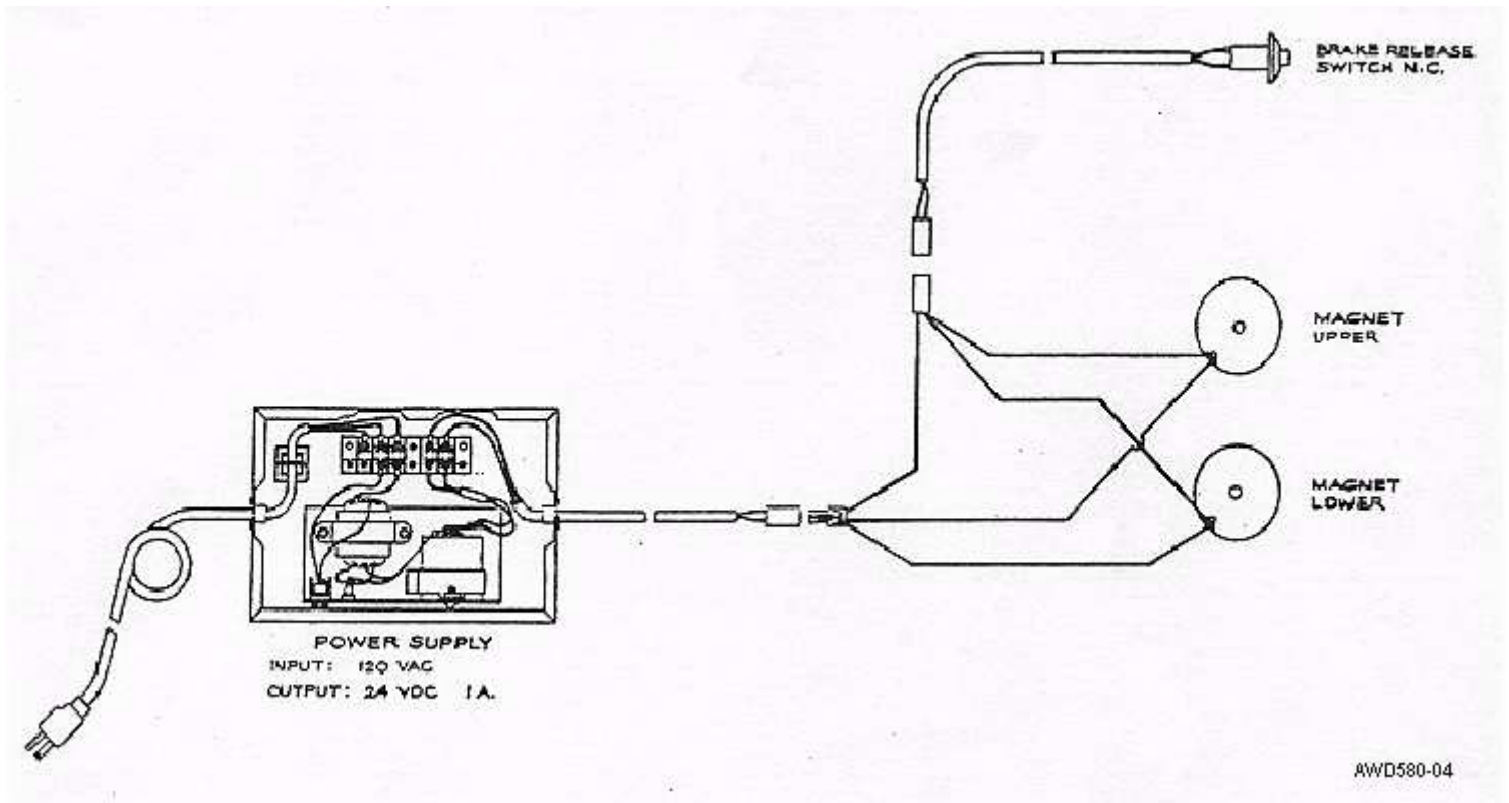


Figure 4: PHYSICAL ROUTING  
ELECTRICAL CONNECTIONS

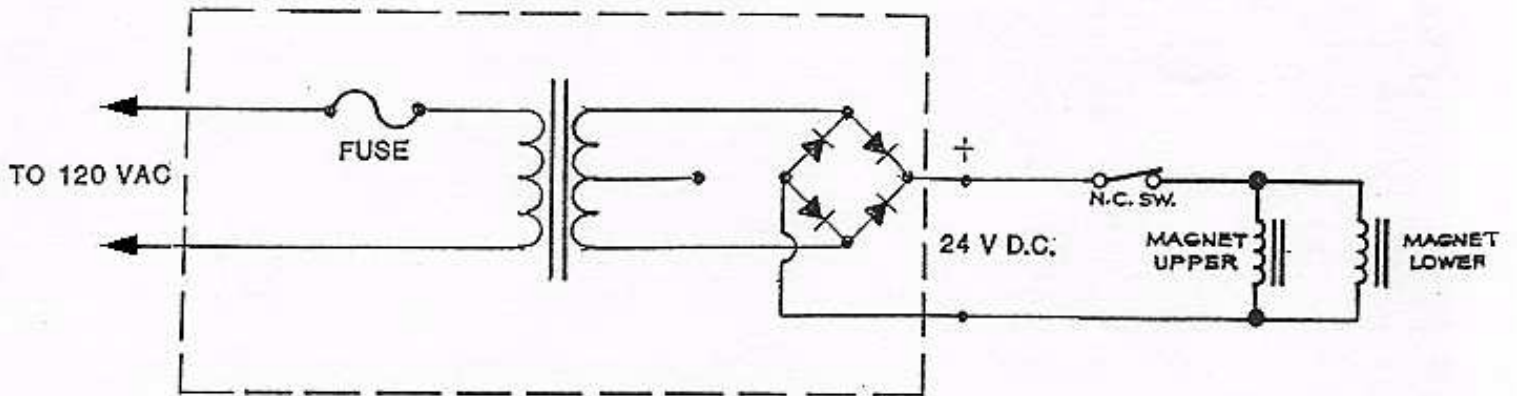


Figure 5: ELECTRICAL SCHEMATIC

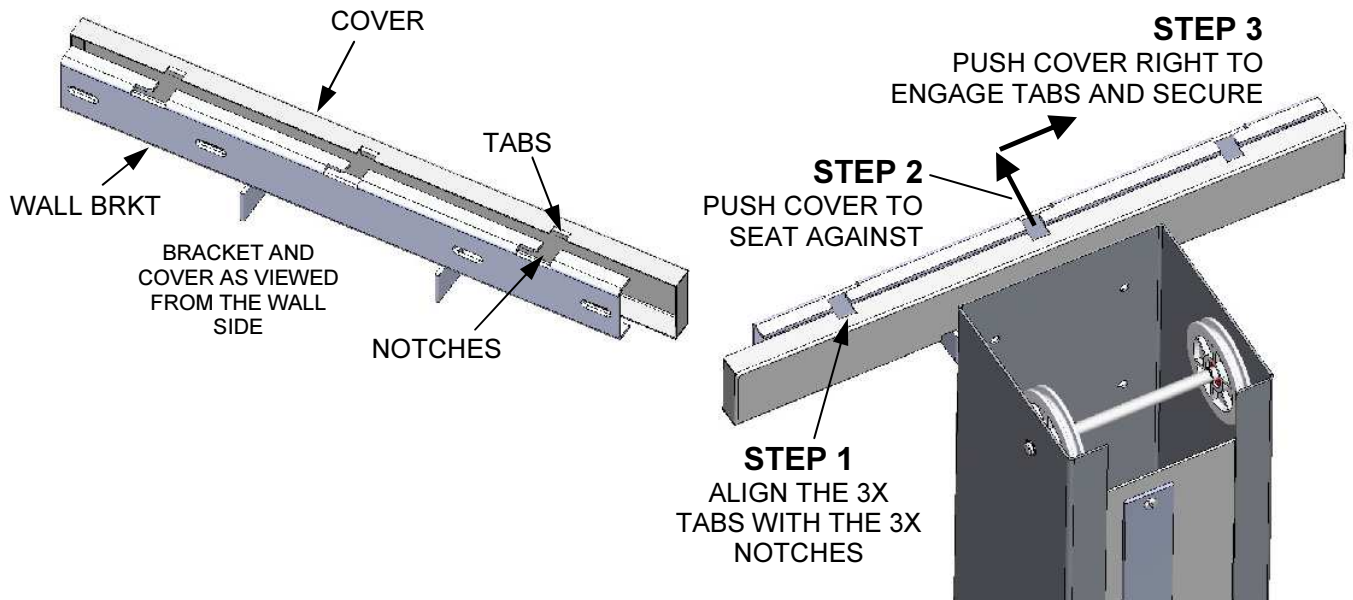


Figure 6: Installing the Wall Bracket Cover