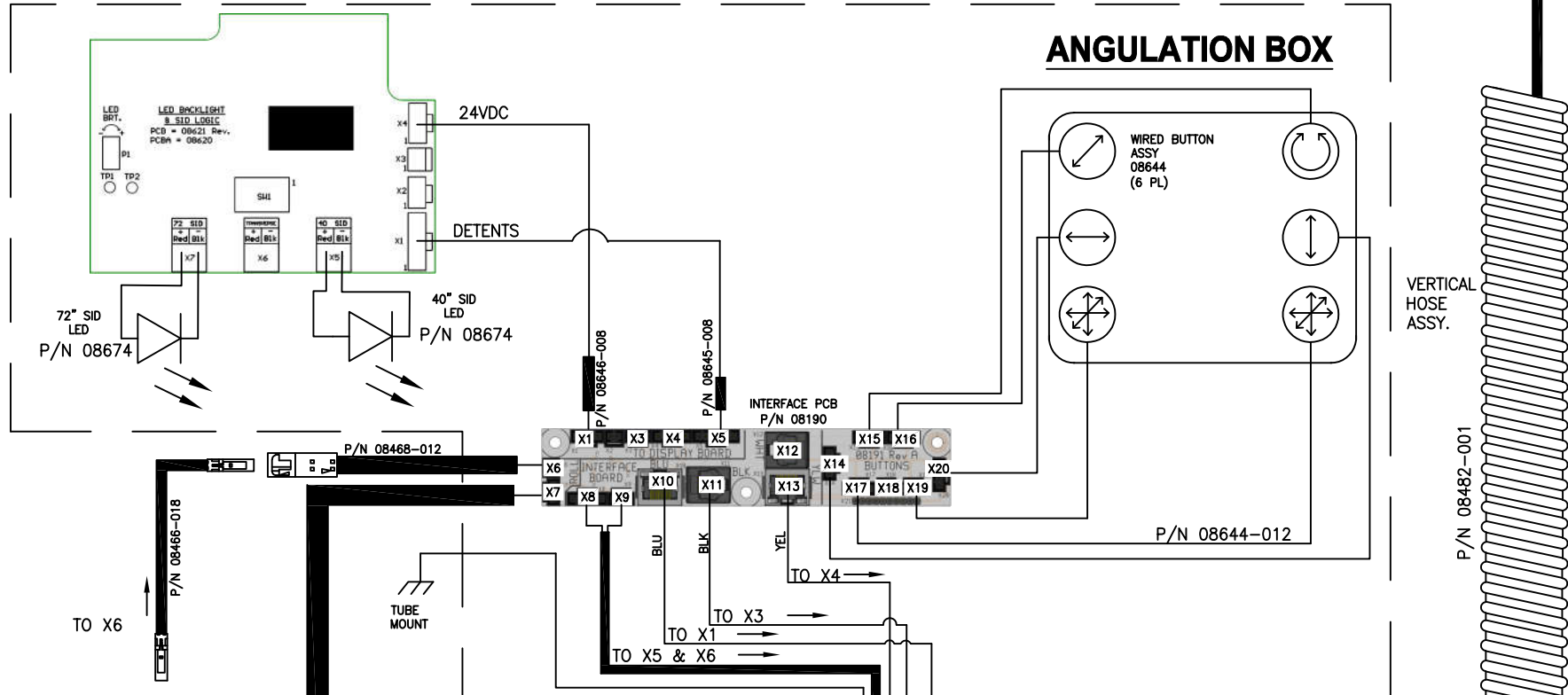
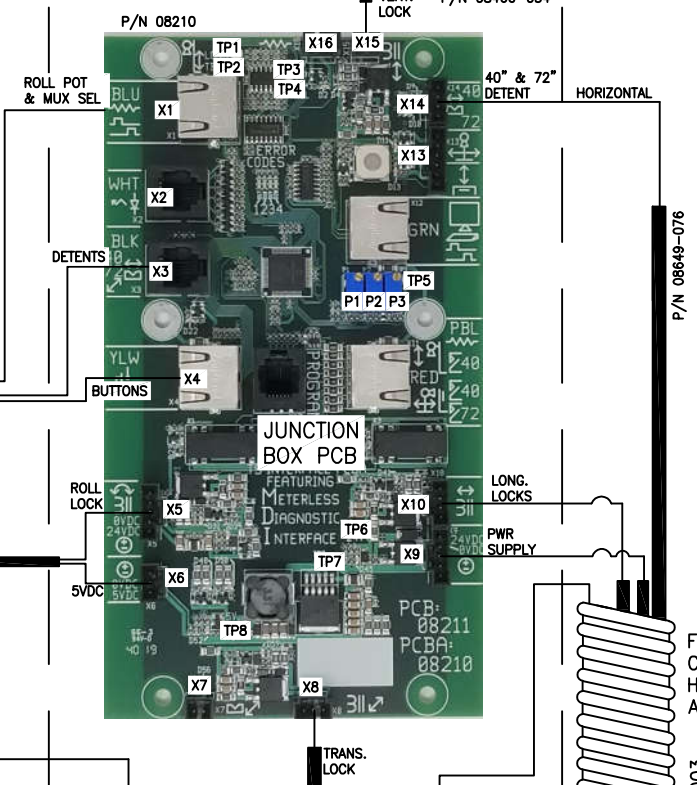


WIRING DIAGRAM J700 FMT CLASSIC



TP1	LONGITUDINAL POT
TP2	TABLE POT
TP3	VERTICAL POT
TP4	ROLL POT
TP5	SPARE POT OUTPUT VOLTAGE
TP6	24 VDC
TP7	0 VDC
TP8	5 VDC
P1	BUTTON BRIGHTNESS POT
P2	BUZZER VOLUME POT
P3	SPARE POT

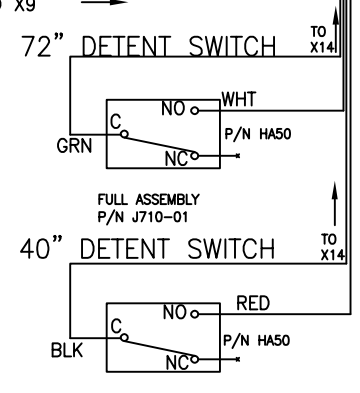
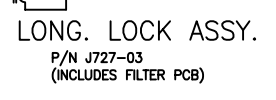
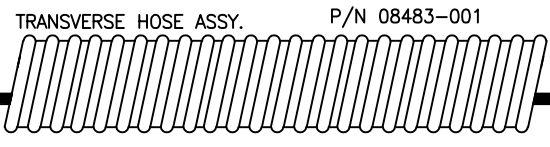
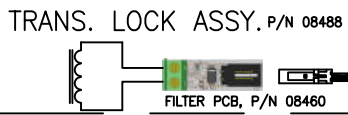
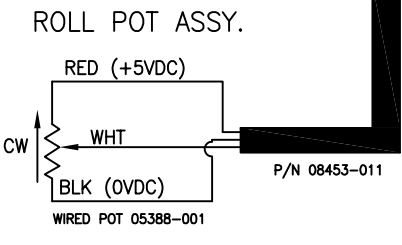
JUNCTION BOX



ERR. CODE	LED	DESC.
E01	□ □ □	ROLL LOCK SHORT
E02	□ □ □	VERT. LOCK SHORT
E03	□ □ □	LONG. LOCK SHORT
E04	□ □ □	TRANS. LOCK SHORT
E05	□ □ □	ROLL LOCK OPEN
E06	□ □ □	VERT LOCK OPEN
E07	□ □ □	LONG. LOCK OPEN
E08	□ □ □	TRANS LOCK OPEN
E09	□ □ □	JCT BOX PCB
E10	□ □ □	JCT BOX PCB
E11	□ □ □	JCT BOX PCB
E12	□ □ □	JCT BOX PCB
E13	□ □ □	PWR SPLY, 24V
E16	□ □ □	ALL LOCK BTN
E17	□ □ □	ROLL LOCK BTN
E18	□ □ □	VERT. LOCK BTN
E19	□ □ □	LONG. LOCK BTN
E20	□ □ □	TRANS. LOCK BTN
E21	□ □ □	ROLL POT
E22	□ □ □	VERT POT
E23	□ □ □	LONG. POT
E24	□ □ □	TBL POT

KEY	
□	LED OFF
■	LED ON
□	BLINK ONCE
■	BLINK TWICE

08505 REV. B



FLOOR CAR