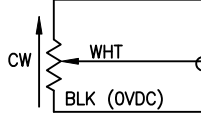


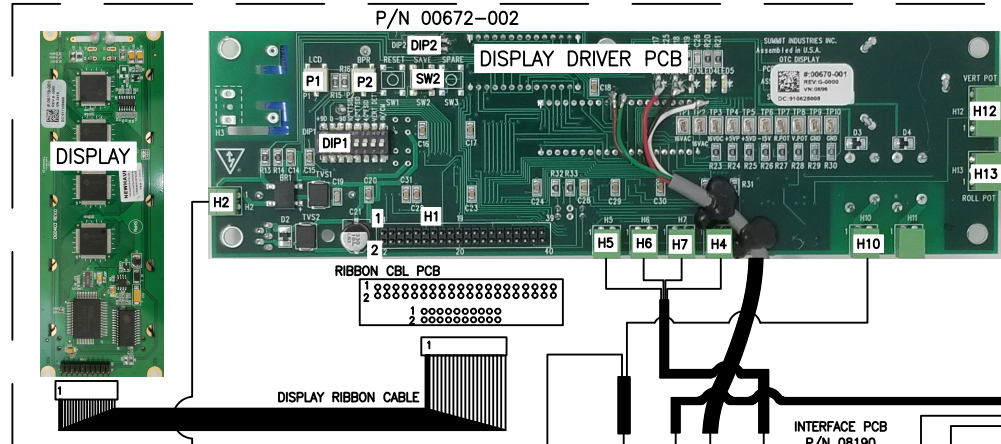
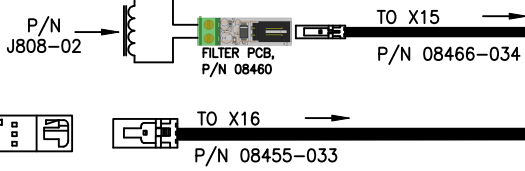
WIRING DIAGRAM J700 DFMT ELITE

DIP1-1-7	CALIBRATION SETTINGS
DIP1-8	IN/CM SELECTION
DIP2-1	LCD BACKGROUND REVERSAL
DIP2-2	ANGULATION TYPE
P1	LCD CONTRAST
P2	BUZZER VOLUME
SW2	SAVE CALIBRATION

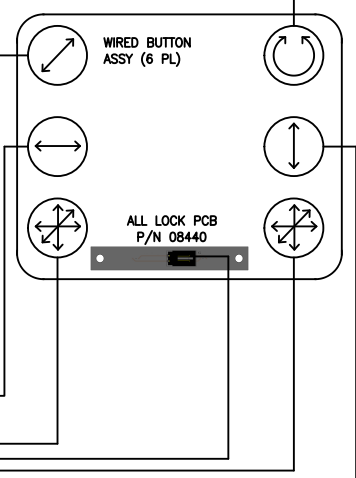
VERT. POT ASSY.
P/N 08014-001
RED (+5VDC)



VERT. LOCK ASSY.

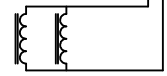


ANGULATION BOX

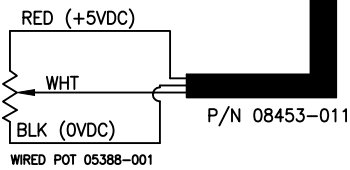


VERTICAL HOSE ASSY.

ROLL LOCK ASSY.
P/N 08487



ROLL POT ASSY.



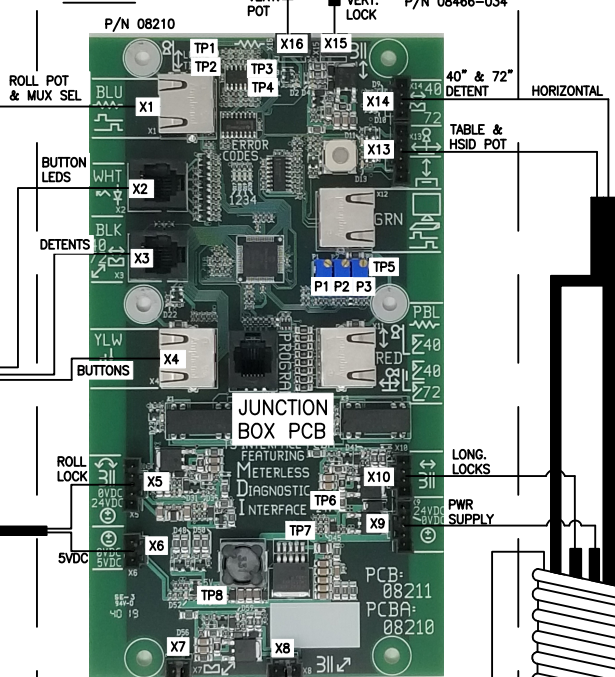
ERR. CODE	LED	DESC.
E01	□□□	ROLL LOCK SHORT
E02	□□□	VERT. LOCK SHORT
E03	□□□	LONG. LOCK SHORT
E04	□□□	TRANS. LOCK SHORT
E05	□□□	ROLL LOCK OPEN
E06	□□□	VERT. LOCK OPEN
E07	□□□	LONG. LOCK OPEN
E08	□□□	TRANS. LOCK OPEN
E09	□□□	JCT BOX PCB
E10	□□□	JCT BOX PCB
E11	□□□	JCT BOX PCB
E12	□□□	JCT BOX PCB
E13	□□□	PWR SPLY, 24V
E16	□□□	ALL LOCK BTN
E17	□□□	ROLL LOCK BTN
E18	□□□	VERT. LOCK BTN
E19	□□□	LONG. LOCK BTN
E20	□□□	TRANS. LOCK BTN
E21	□□□	ROLL POT
E22	□□□	VERT. POT
E23	□□□	LONG. POT
E24	□□□	TBL POT

KEY	
□	LED OFF
□	BLINK ONCE
■	LED ON
□	BLINK TWICE

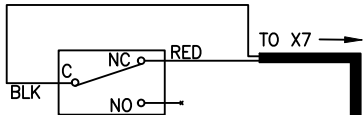
08505 REV. B

TP1	LONGITUDINAL POT
TP2	TABLE POT
TP3	VERTICAL POT
TP4	ROLL POT
TP5	SPARE POT OUTPUT VOLTAGE
TP6	24 VDC
TP7	0 VDC
TP8	5 VDC
P1	BUTTON BRIGHTNESS POT
P2	BUZZER VOLUME POT
P3	SPARE POT

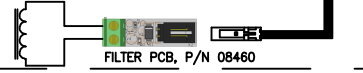
JUNCTION BOX



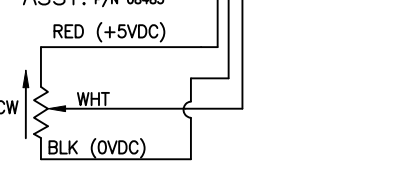
P/N 08455-003
TRANS. DETENT SWITCH



TRANS. LOCK ASSY. P/N 08488



HSID POT ASSY. P/N 08485



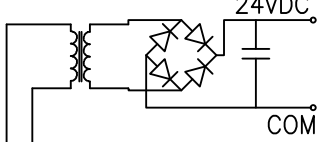
LESS HDWR POT & WIRES ONLY
P/N 08486

LONG. LOCK ASSY.

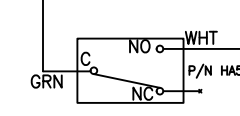
LONG. LOCK ASSY.
P/N J727-03
(INCLUDES FILTER PCB)



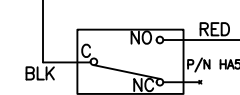
POWER SUPPLY, 08647
24VDC



72" DETENT SWITCH



40" DETENT SWITCH



FLOOR CAR

CABLE 08453-042
EXITS THE TABLE,
CONNECT TO DFMT
ELITE CABLE