

INNOVET VERSA DIGITAL VETERINARY INTEGRATED TABLE/TUBE STAND SYSTEM

This fully-integrated, UL-Classified table/tubestand and high frequency generator system requires as little as 13.3 sq-ft of floor space (fixed table top). Tube is fixed at 40 inch SID and X-ray beam direction is fixed downward (no angulation). Image receptor and tubestand are stationary & permanently aligned. Options include Fixed or 4-way Float table top, hands-free collimator light, traditional 2-stage Prep/Expose or latching prep, operator's console for X-ray generator can be 2-point (kV/mAs) or Anatomically Programmed technique factor type, foot treadle exposure switch & various types of digital image receptors are available.

SPECIFICATIONS

Space requirements (does not include space for the image acquisition work station nor the X-ray generator)	Column height: 77.5" Minimum ceiling height: 83.5" (includes 6" clearance above top of column to allow for installation & service access) Fixed table top: 57.3" wide, 33.5" deep 4-way float table top: 73.5" x 41.8"
Mounting	Bolts to floor are recommended. Due to the size of the digital image receptor within the table base, the HV transformer & generator's power module will be mounted outside of the table base.
Electrical access	All cables enter from rear or side of table. Front covers of table are removable for internal access.

ELECTRICAL REQUIREMENTS (For Summit 30kW 20kHz HF X-ray generator)

See TDS020 for generator requirements.
The generator provides 24 VAC and 24 VDC supply voltages for table locks and collimation.

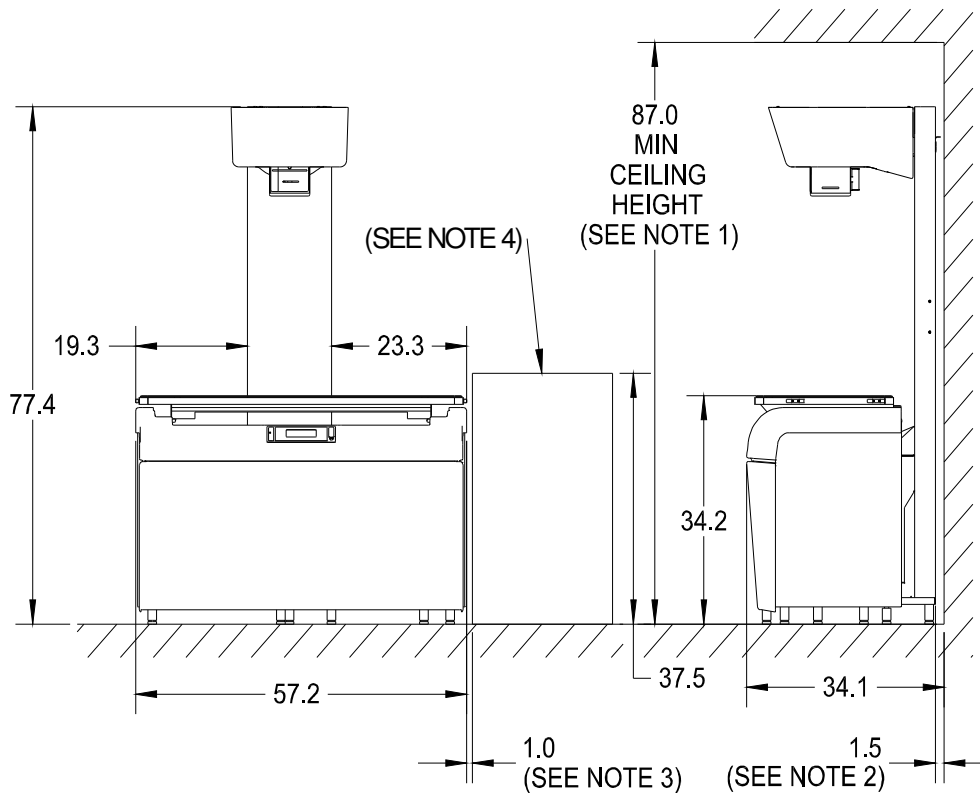
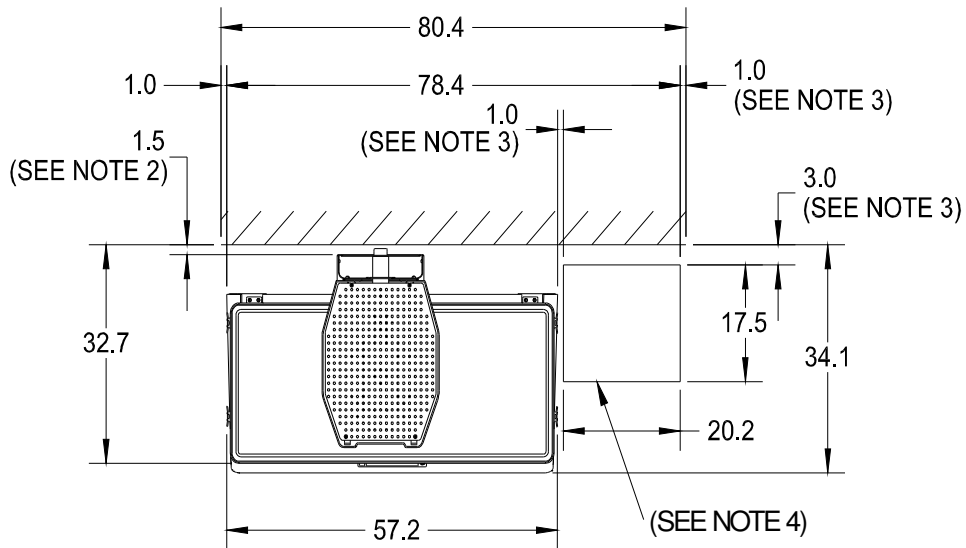
SHIPPING INFORMATION

CONTENTS	DIMENSIONS	WEIGHT
Tubestand	81" x 17" x 7"	150 lbs.
Table, collimator, tube, film cab, grid, tray, table covers, tube cover, tube mount, tube arm & accessories	Fixed table top: 62.5" x 37.5" x 44" 4-way table top: 73" x 38.5" x 44"	Fixed table top: 450 lbs. 4-way table top: 575 lbs.

MISCELLANEOUS

Rated for 300-pound patient load.
Specifications subject to change without notice.

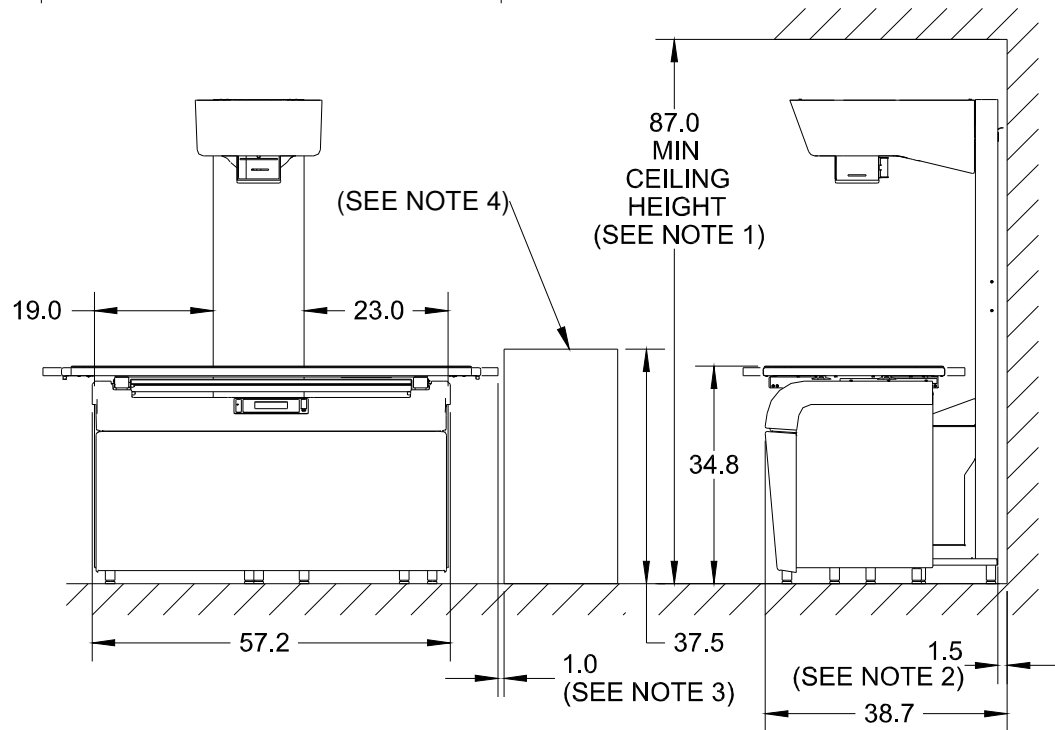
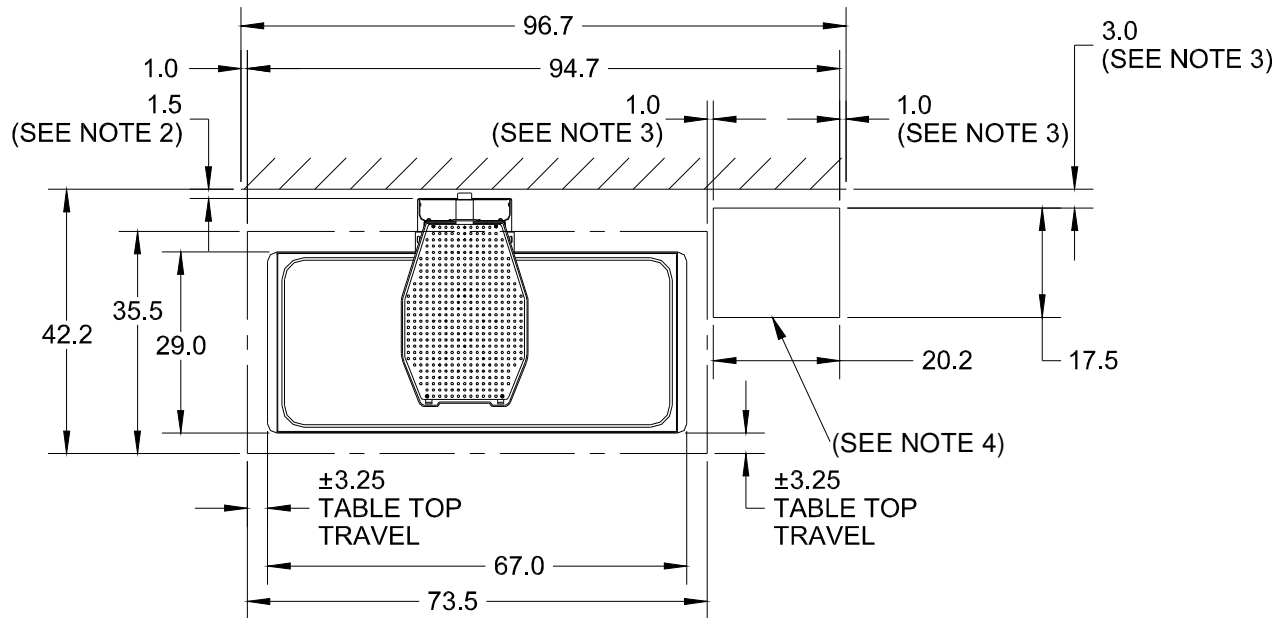
INNOVET VERSA
 DIGITAL - FIXED TT



NOTES:

1. 9.6" ADDED ON TOP FOR ACCESS INSIDE TUBE COVER ASSY.
2. 1.5" REAR GAP FOR BRACKET.
3. SOME GAP (~1" SIDES, ~3" REAR) FOR HF GENERATOR.
4. SUMMIT SYNERGY HF GENERATOR (37.5" TALL).

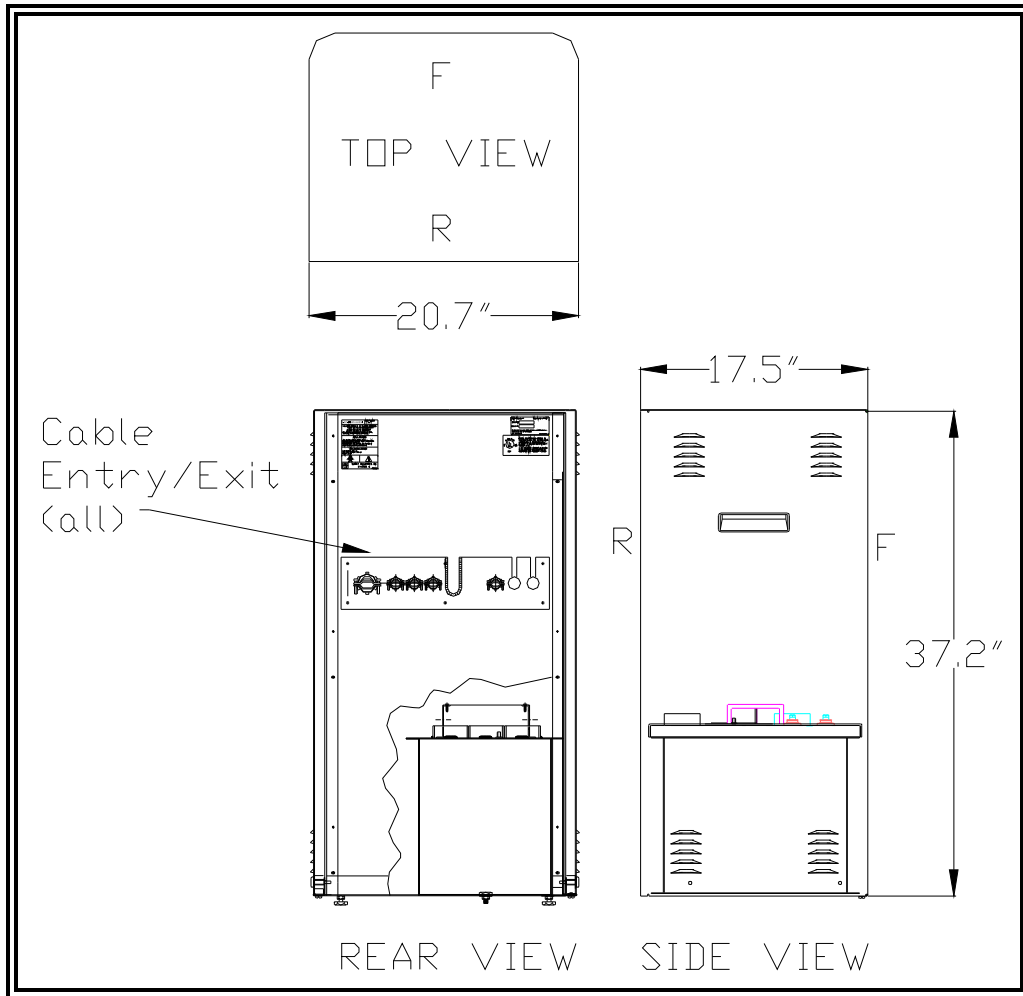
INNOVET VERSA DIGITAL - 4-WAY FLOAT TT



NOTES:

1. 9.6" ADDED ON TOP FOR ACCESS INSIDE TUBE COVER ASSY.
2. 1.5" REAR GAP FOR BRACKET.
3. SOME GAP (~1" SIDES, ~3" REAR) FOR HF GENERATOR.
4. SUMMIT SYNERGY HF GENERATOR (37.5" TALL)

Figure 1: Dimensions – Generator



SYNERGY HF 30KW (TALL)

Figure 2: IDC Digital Receptor System Interconnections

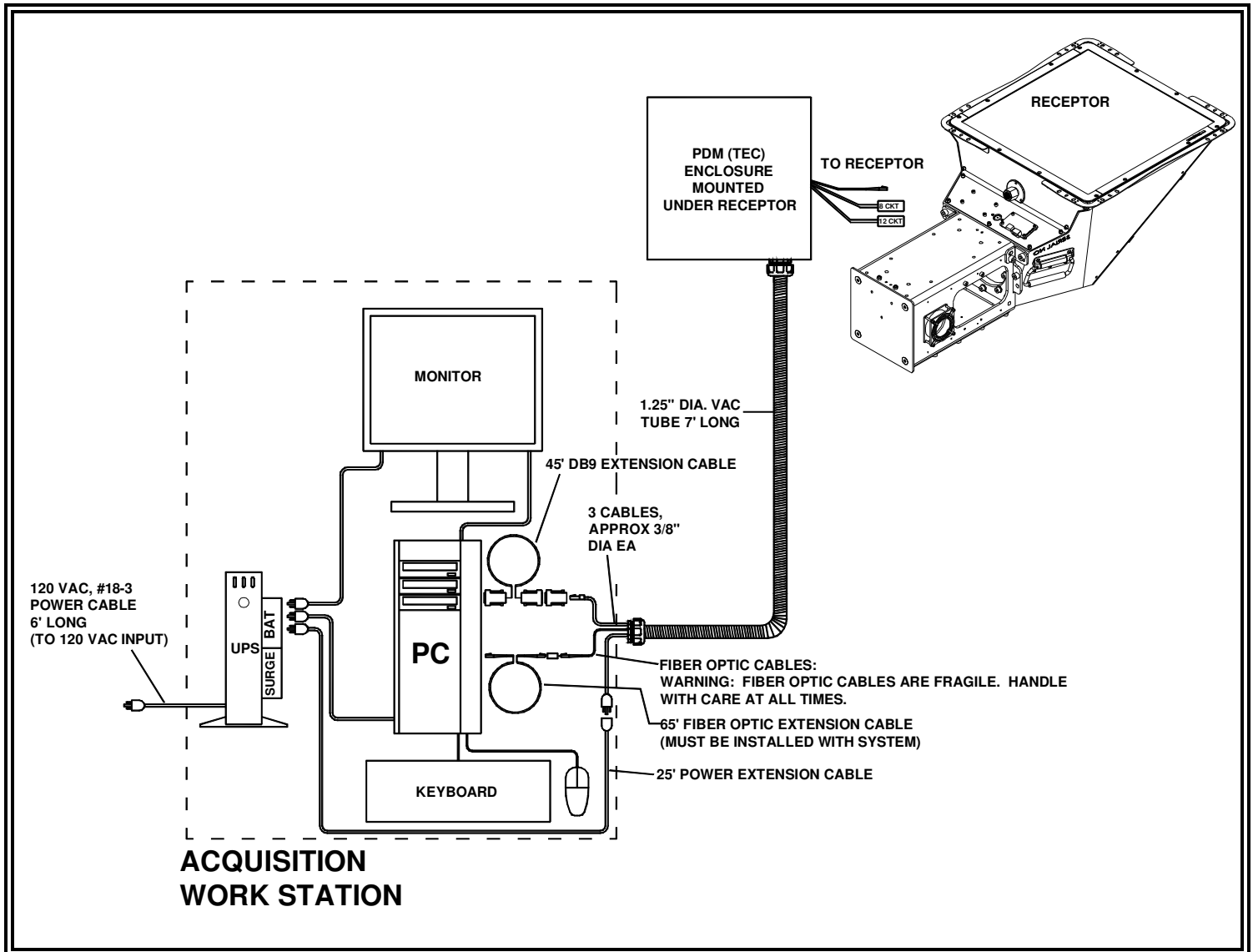
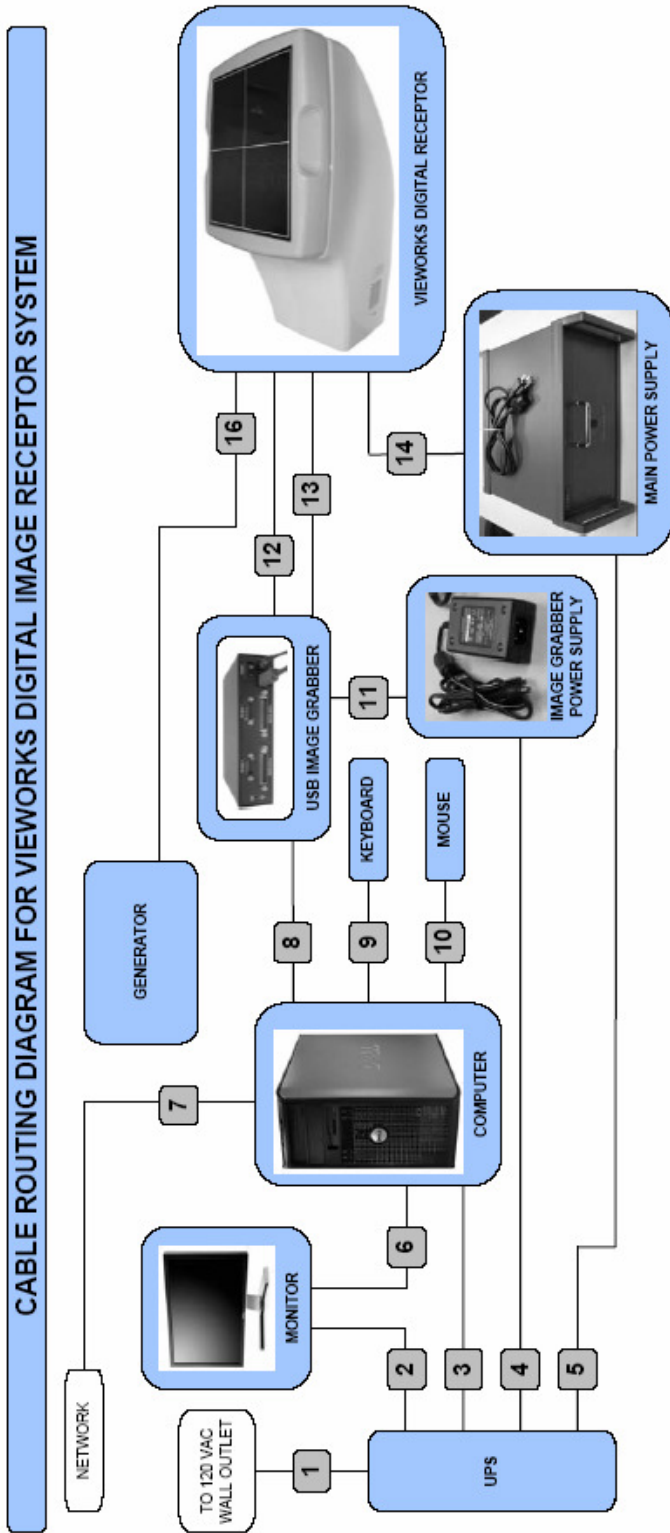


Figure 2 and 3 can be used to determine an adequate computer interface cable drape (for the network cable and the fiber-optic cable). The installer must investigate and develop a cable draping configuration from the x-ray system to the computer prior to installation. Some of the information that must be gathered is:

- Where will the workstation reside.
- Where will the table reside.
- Will the network and fiber-optic cables need to be routed through a ceiling or floor.
- How much cable coverings will be needed.
- How much cable visibility is the customer willing to accept.

Figure 3: VIEWWORKS System Interconnections

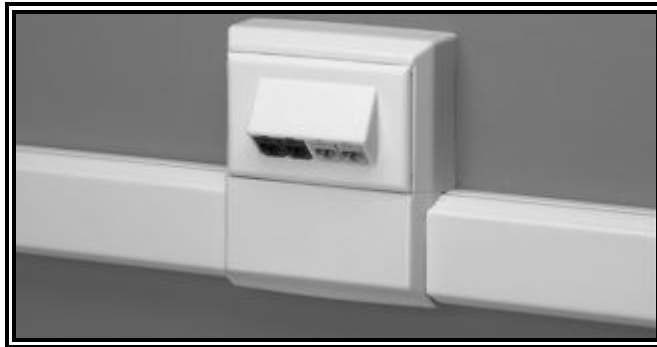


Ref No.	Function	Cable Type, Length	End "A" Connector Type & Size	End "B" Connector Type & Size	(ID label on cable)
1	UPS power (120VAC)	#18-3, 6'	Male 3-prong plug (NEMA 5-15), 120VAC, 1.2" dia.	Female 3-crct plug (IEC60320-C13), 1.2" dia.	
2	Monitor power (120VAC)	#18-3, 6'	Male 3-prong plug (NEMA 5-15), 120VAC, 1.2" dia.	Female 3-crct plug (IEC60320-C13), 1.2" dia.	
3	PC power (120VAC)	#18-3, 6'	Male 3-prong plug (NEMA 5-15), 120VAC, 1.2" dia.	Female 3-crct plug (IEC60320-C13), 1.2" dia.	
4	PS brick power (120VAC for Image Grabber)	#18-3, 6'	Male 3-prong plug (NEMA 5-15), 120VAC, 1.2" dia.	Female 3-crct plug (IEC60320-C13), 1.2" dia.	
5	Main PS (120VAC for receptor)	#18-3, 6'	Male 3-prong plug (NEMA 5-15), 120VAC, 1.2" dia.	Female 3-crct plug (IEC60320-C13), 1.2" dia.	1200-3407-01A
6	Video cable	#22-15, 6'	DB15, 1.5" x 0.5"	DB15, 1.5" x 0.5"	
7	Network cable for PC (not provided)		RJ45 Male	RJ45 Male	
8	Image signal back to PC	USB, gray, 5'	USB type A, 0.75" x 0.25"	USB type B, 0.62" dia.	
9	Keyboard cable	USB, blk, 6'	USB type A, 0.75" x 0.25"	Hardwired to KB	
10	Mouse cable	USB, blk, 6'	USB type A, 0.75" x 0.25"	Hardwired to Mouse	
11	Image Grabber power	#18-2, blk, 5'	Hardwired to PS brick	2-crct, round, 0.5" dia.	
12	Camera Interface	50-conductor, blk, 49'	Male 2x25 connector, 2.5" x 0.5"	Male 2x25 connector, 2.5" x 0.5"	1110-3517-01A
13	Image signal to grabber	#22-9, blk, 82'	Female, RS232 DB9, 1.5" x 0.5"	Male, RS232 DB9, 1.5" x 0.5"	1170-3414-01A
14	Receptor power	#18-5, blk, 33'	5-crct round, 1" dia.	5-crct round, 1" dia.	
15					
16	Exposure trigger signal	#22-2, blk, 49'	Male, DB15, 1.5" x 0.5"	Bare stripped end, 0.25 dia.	1170-3417-01A

WARNING: The two cables of primary concern are the fiber optic cable and the network cable. Both cables are sensitive and must be treated with care. Each cable in itself is less than ¼” in diameter. If the installer is planning on using conduit, and is planning on fishing the cables through the conduit, then a conduit that is at 1” in diameter (min) must be used to allow for connector clearance. In addition, the user must be **extra careful** with the **ends of the fiber optic cable**. The ends are extra sensitive and are prone to damage when mishandling occurs.

It is up to the installer to ensure that the cables are draped and protected in such a fashion as to ensure that no stress or strain is ever applied to them. In addition, the cables must also be protected from chemicals, wear, inadvertent damage, etc. If mounting the cables to a floor, then a protective floor covering must be used. If mounting the cables across a wall, then conduit or cable covering/raceways (see Figure 4) must be used (decorative raceways are acceptable as long as they provide protection first and foremost). The installer should question the end user as to where they are going to want to mount their computer system, and gather the necessary amount of protective covering based on the room layout at hand.

Figure 4: Example of a Raceway Cover



The raceway above is manufactured by Panduit and is referred to as: the Pan-Way T45 Surface Raceway System. The system may be purchased at Newark Electronics (www.newark.com).

It is up to the installer to ensure that the end user has an adequate area for keeping the PC, Monitor, Keyboard, Mouse, and UPS off of the floor. It is recommended that the user purchases a PC cart that can hold all the components prior to installation. Summit provides an optional PC cart (summit #02443, MFR: SMEAD, MFR#:06702).

Figure 5: Optional PC Cart – Dimensions

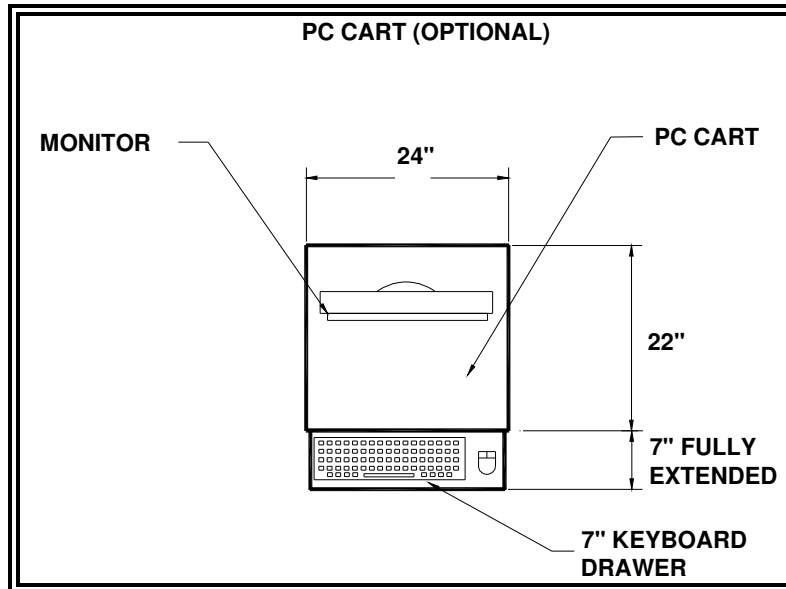


Figure 6: Optional PC Cart – Photo



Note: The Summit cart (2443) has gray shelves

A cart with a pull out keyboard drawer and a lower shelf that is at least the following dimensions will suffice to hold the PC and UPS:

- 14" Deep (min)
- 16" Wide (min)
- 17" Tall (min)

If the customer needs to mount the workstation to a wall, then a wall mount holders should be purchased for each component prior to installation as well.

Figure 7: Optional - Wall Mount for Monitor/Keyboard



Figure 8: Wall Mount for PC or UPS

